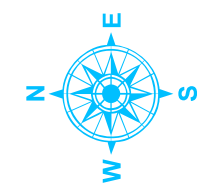


Calvert County Plate 7b

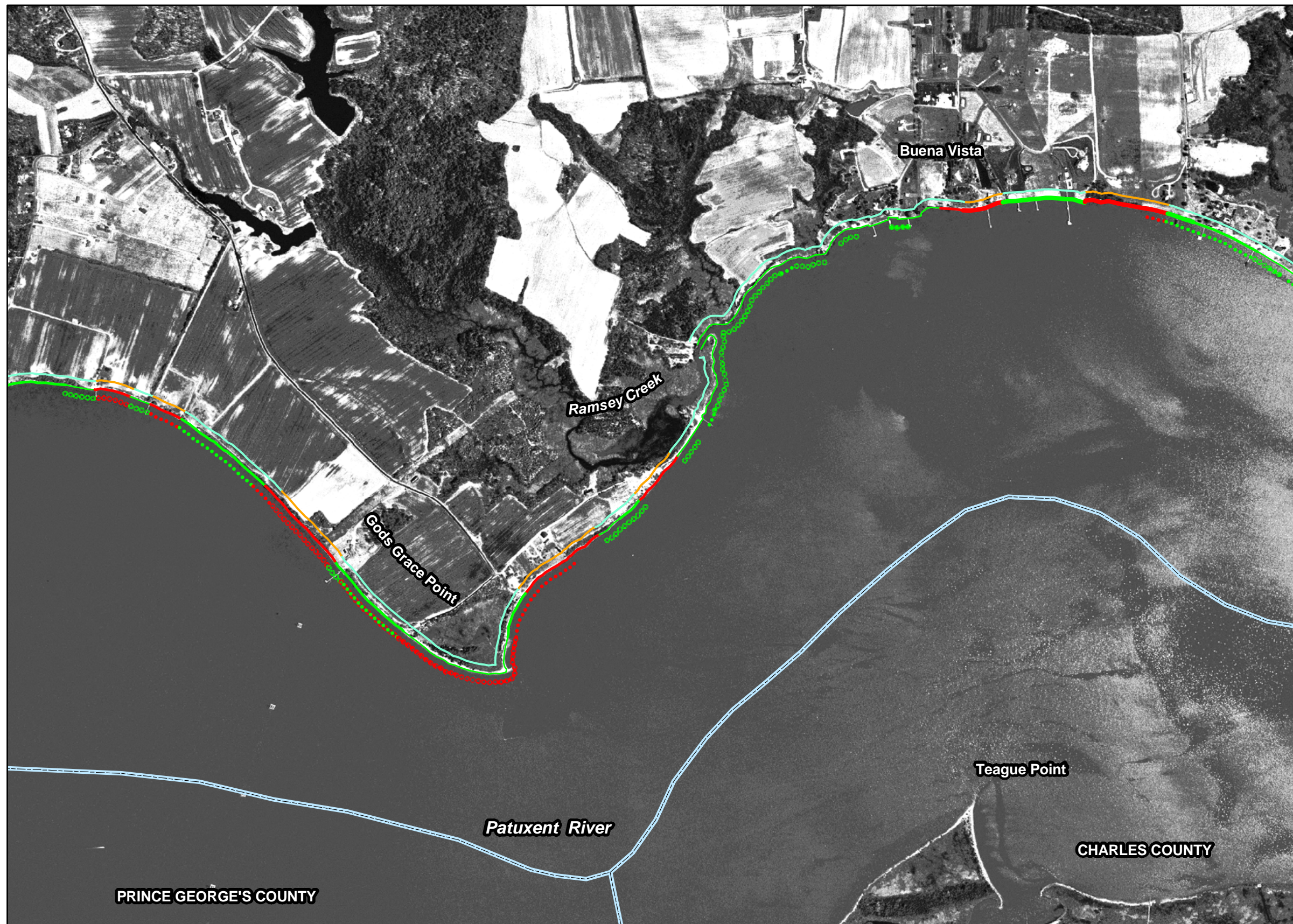
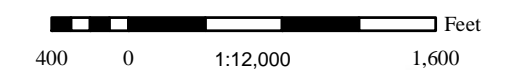
Bank and Buffer Conditions

Legend

- 0-5 ft, low erosion
- 0-5 ft, high erosion
- 0-5 ft, undercut bank
- 5-10 ft, low erosion
- 5-10 ft, high erosion
- 5-10 ft, undercut bank
- 10-30 ft, low erosion
- 10-30 ft, high erosion
- 10-30 ft, undercut bank
- >30 ft, low erosion
- >30 ft, high erosion
- >30 ft, undercut bank
- bare bank cover
- partial bank cover
- total bank cover
- ⋯ beach/low erosion
- ⋯ beach/high erosion
- marsh/low erosion
- marsh/high erosion
- Phragmites australis



Scale



PRINCE GEORGE'S COUNTY

CHARLES COUNTY