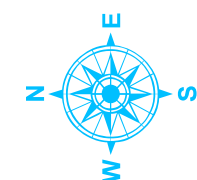


Calvert County Plate 14c

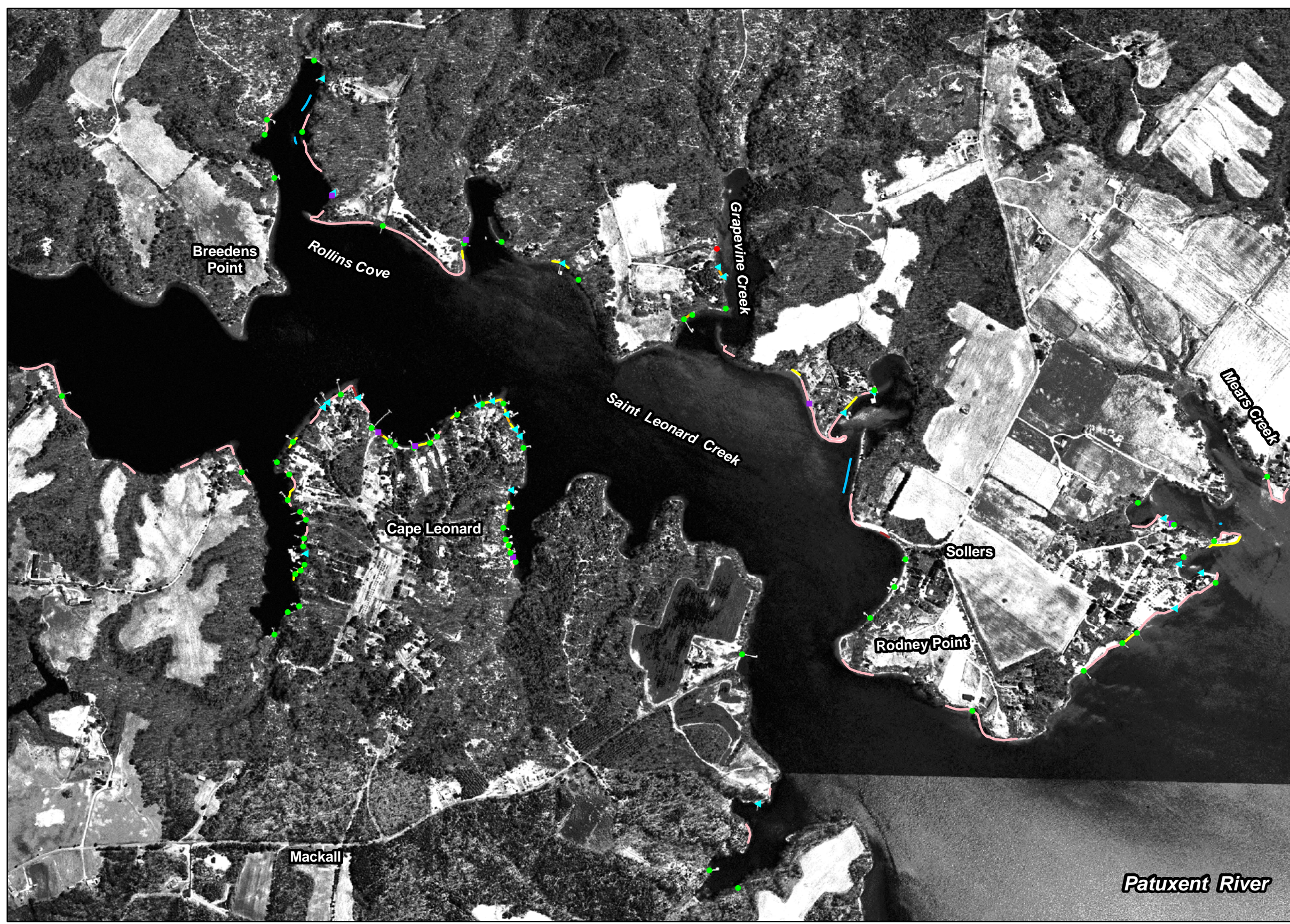
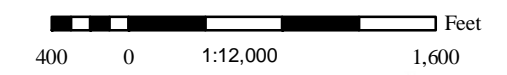
Shoreline Features

Legend

-  breakwater
-  bulkhead
-  debris
-  dilapidated bulkhead
-  groinfield
-  jetty
-  marina, <50 slips
-  marina, >50 slips
-  riprap
-  unconventional
-  wharf
-  boat house
-  dilapidated pier
-  outfall
-  pier
-  private boat ramp
-  public boat ramp



Scale



Patuxent River